

ToooAir

Phone: (02) 9157 0540
Email: support@toooair.com.au
Web: www.toooair.com.au
Address: Suite 1103, 1 Newland Street Bondi Junction NSW 2022

ToooAir Wide Area Dispatcher Install Guide Version 1.1.3

Minimum System requirements:

Windows XP, 7, 8, 10

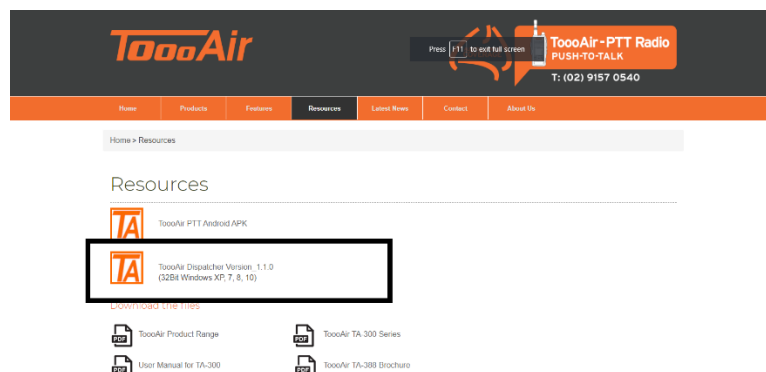
CPU: Intel Celeron N4000 1.1 GHz (or equivalent)

RAM: 2 GB

Storage: 5 GB (Install 150MB)

Internet: ADSL 2+

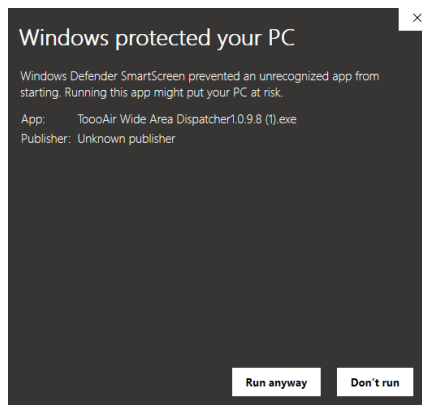
1. Navigate to the ToooAir website and download the dispatcher software by clicking on "ToooAir Dispatcher_1.1.3" located in the Resources section of the website;
<https://www.toooair.com.au/Resources>



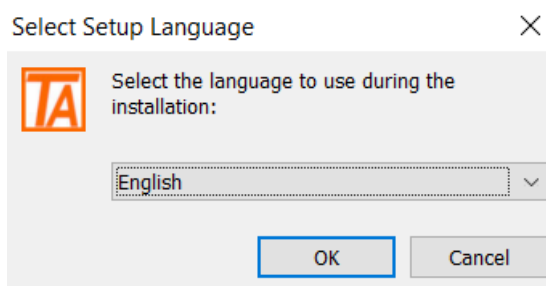
2. The software should begin downloading, once finished click the ToooAir Wide Area.exe application to begin installation or navigate to your downloads folder and run the .exe by double clicking the ToooAir Wide Area.exe application.



3. You will be prompted by a “Non Recognized” app warning, click more and click “Run anyway”

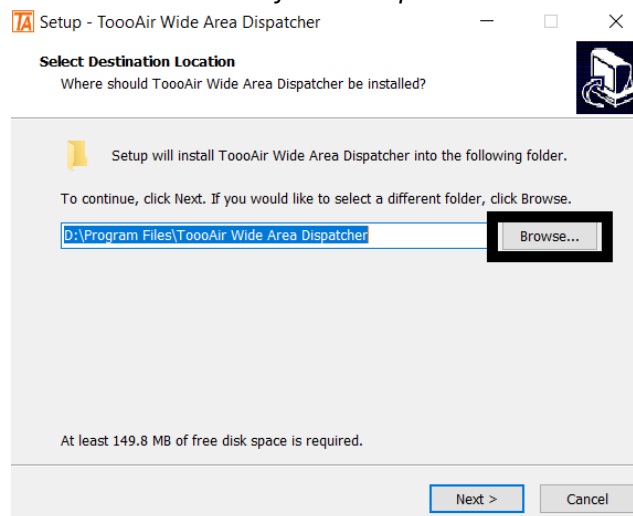


4. Select a language and click “OK”

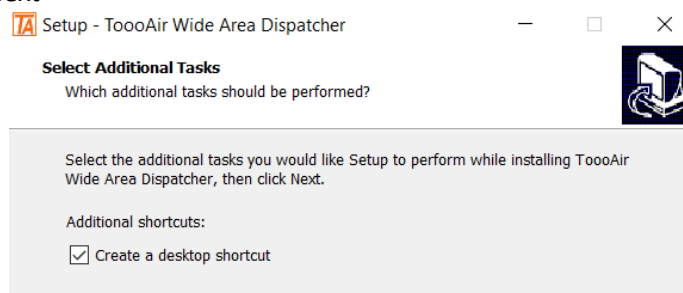


5. Click “Browse” and select a directory to install the software into, the recommended default is: C:\Program Files\ToooAir Wide Area Dispatcher and click “Next”

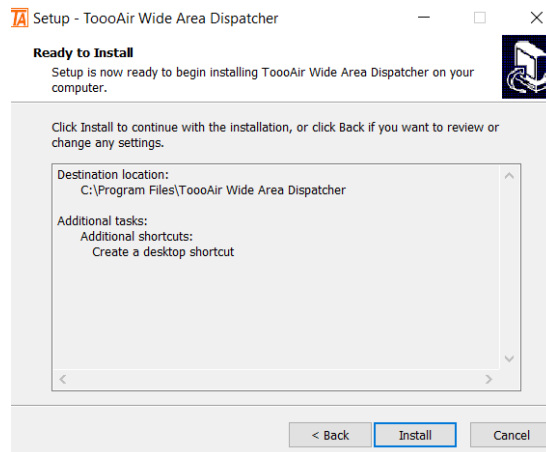
Please note: If you do not have a D: the default save path will not work



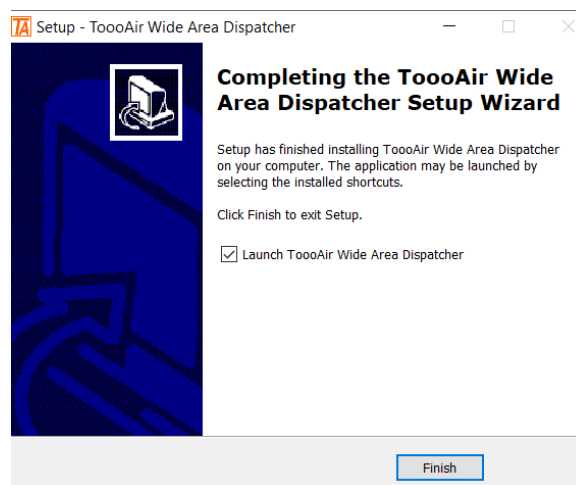
6. Ensure a shortcut is created for the dispatcher this will be useful for running the application later and click “Next”



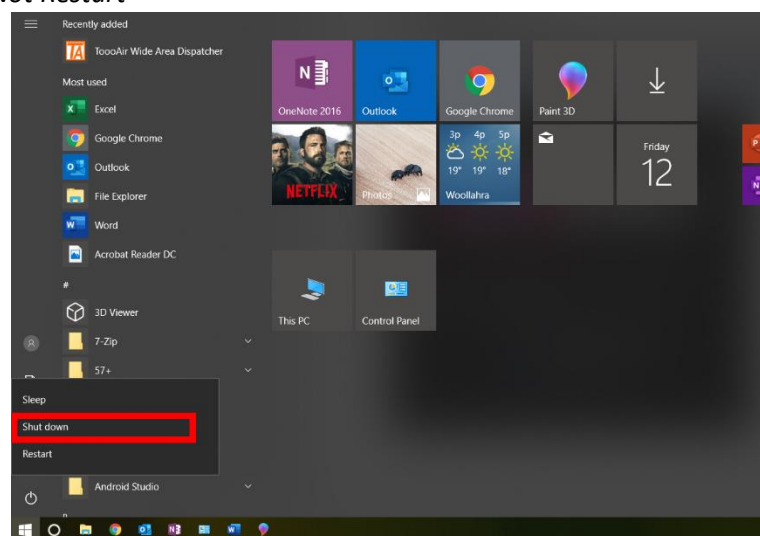
7. Click "Install"



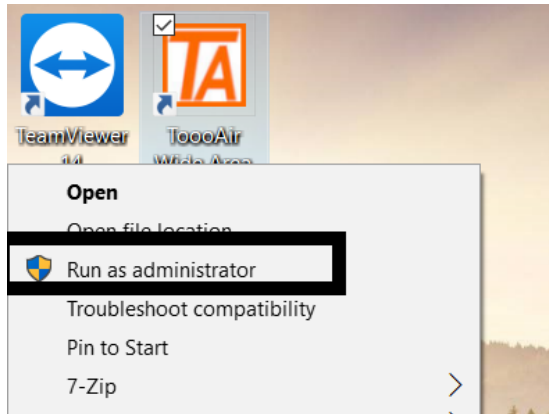
8. Click "Finish"



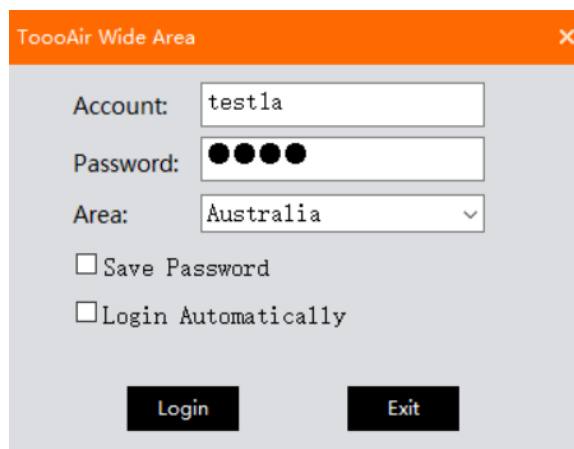
9. Perform a full system shutdown, navigate to your start menu and select "Shut down"
Please note: Not Restart



10. Once you have powered on the machine right click on the shortcut and select “Run as administrator”



11. Enter dispatcher account details and click “Login”



By following the above steps you will have successfully installed the latest ToooAir dispatcher, if you are still having issues or unable to install the software please contact ToooAir via email: support@toooair.com.au