



ToooAir

TE390 Quick Start Guide

Tooo Air Wide Area Platform

Tooo Air PTY LTD
Suite 1103, 1 Newland Street Bondi Junction, NSW 2022



TE390 Quick Start Guide



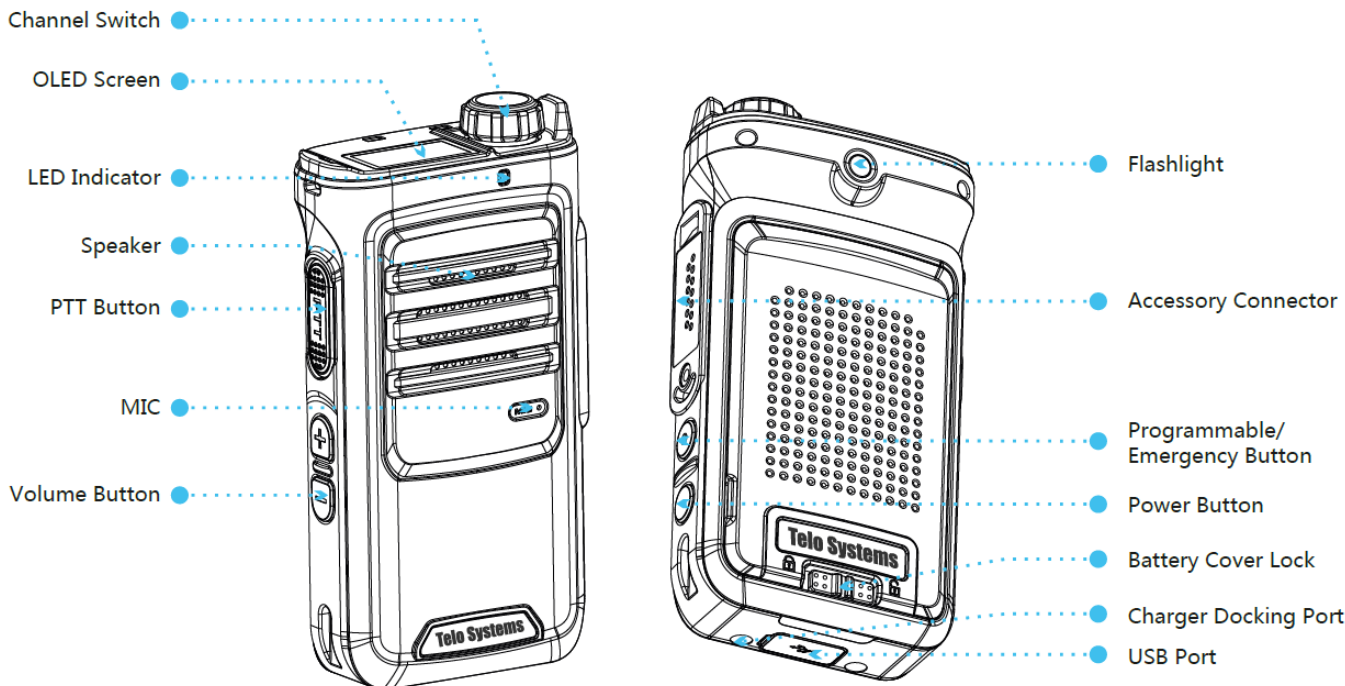
Thanks for choosing our product!

This Quick Start Guide is Only applicable to: TE390.

Before using the product, please read the Quick Start Guide to fully benefit from the TE390.

TE390 DIAGRAM

Operating State	Indication
Standby	Green (Blinking)
Searching Network	Green (Fast Blinking)
Low Battery	Red (Blinking)
Charging	Red (Steady)
PTT Transmitting	Red (Steady)
PTT Receiving	Green (Steady)



GETTING STARTED

Push-To-Talk Application

Go to the PTT menu, single click to enter into the PTT application interface. Switch between different groups to execute instant communication.

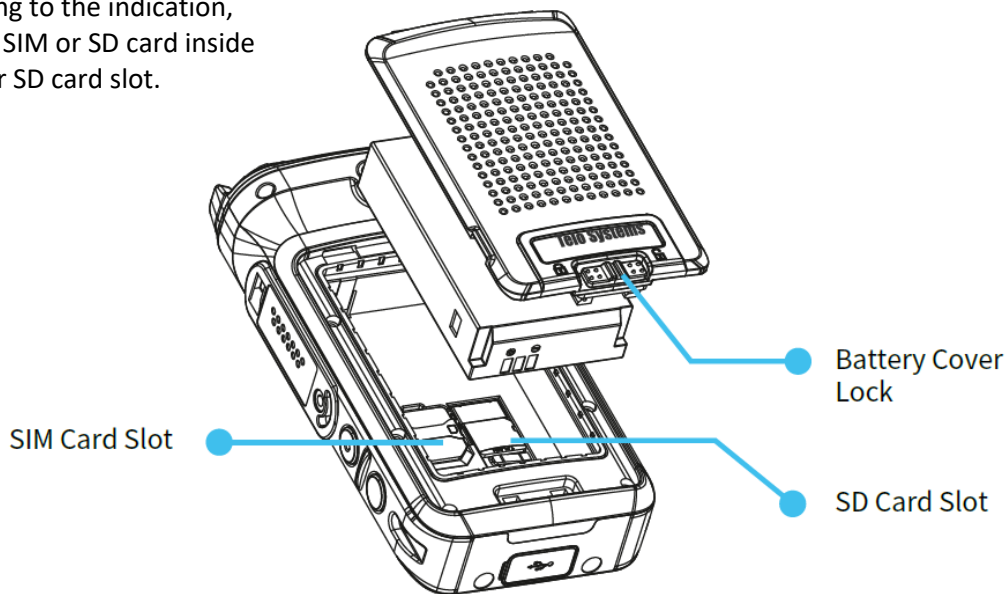
Before Use

1. Release the battery cover lock, move the battery cover away.

2. According to the indication, insert the SIM or SD card inside the SIM or SD card slot.

3. Put the Battery into the slot.

4. Lock the battery cover.



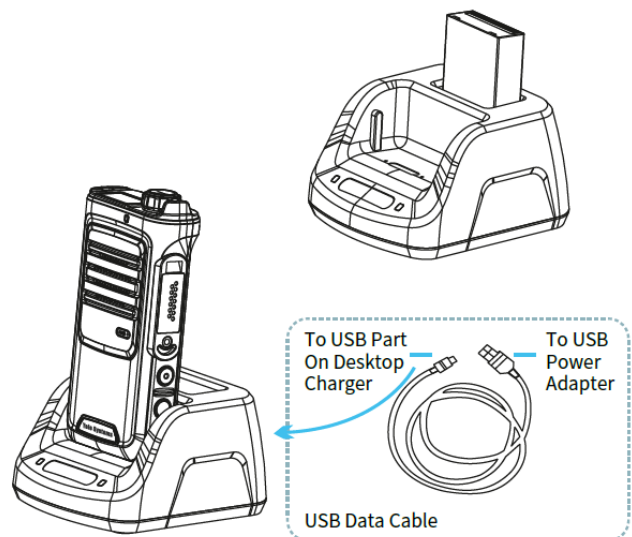
Charging

Using Desktop Charger

Connect the Desktop Charger and the Power Adapter with an USB Data Cable.

Red light on the desktop charger indicates battery charging in progress.

Green light on the desktop charger indicates fully charged.



Note

- **Warranty period is 1 year from date of purchase**
- **For additional warranty information please check:** <https://www.tooair.com.au/TermsConditions.aspx>

This product involves constant upgrading and/or improvement, our company reserves the right to change the specifications of software and/or hardware mentioned in this operating guide without any prior notice. The product specifications and information mentioned in the operating guide are for reference only.

Check List



TE390×1



Battery×1



USB Data Cable×1



Travel Charger×1



Quick Start Guide×1



Belt Clip×1

Notice:

Please check the following accessories before you discard the packing material. Please contact your local dealer immediately if there is any missing or damage parts.

Basic Operation

Power On / Off

Long press the Power Button to power on/off the device.

Screen Interaction

Channel Switch

- Single Click: Lighten the screen/Enter a menu or choose an option
- Long Press: Back to the previous menu
- Switch clockwise/counterclockwise for switch next/previous menu item

Individual Call

From the home menu rotate the channel switch to the menu “PTT”, click the channel switch. Click the channel switch on desired group to enter individual call mode. Rotate channel switch to select desired user, click channel switch on desired user to begin individual call. Rotate channel switch to exit individual private call.

SOS

Double tap SOS button to alert SOS broadcast, press PTT to end SOS broadcast.

ADVANCED CONFIGURATIONS

WiFi Connection

Go to Settings > Wi-Fi interface. Enable the Wi-Fi option (single click to revert the status). Switch to find the right access point you want to connect to, single click the access point then input the password in (Single click to input lowercase, double click to input uppercase). Switch to select inputting characters. Click “√” to confirm / exit the password inputting.

GPS Location

Go to Settings > Location interface, single click to enable or disable GPS location.

Date & Time Configuration

Go to Settings > Date & Time interface, single click to configure time display format.

Bluetooth Connection

Go to Settings > Bluetooth interface, Switch to choose “PTT Button”, single click to enable Bluetooth connection, after Scanning, switch and find the right device name, single click to confirm bonding to the Bluetooth button, for all other Bluetooth devices please choose “Headset” with the same operation.

Cellular Data Connection

Go to Settings > Cellular data interface, single click to revert enable or disable cellular data connection.

Flashlight

Go to Settings > Flashlight interface, single click to turn on/off the flashlight or Press the Vol- and Programmable button at the same time to turn on/off it.

Battery Percentage

Go to Settings > Battery percentage interface, single click to show / hide the battery percentage status on the display screen.

M6 Settings

Go to the Settings > M6 Settings interface, single click the channel switch to choose "Headset" or "Remote Speaker Mic" mode.

Language

Go to Settings > Language interface, switch and single click to choose desired language.

Factory Reset

Go to Settings > Reset interface, under the interface “Are you sure about recovery?”, switch the options, choose “Yes” to reset and “No” to exit.

System Information

Go to Settings > About interface, find the device and SIM card information including Operation System Version, IMEI Code, Battery Percent, SIM Name, SIM Level, SIM Type.

System Update

Go to Settings > System Update interface, single click to check for updates.

Using USB Data Cable

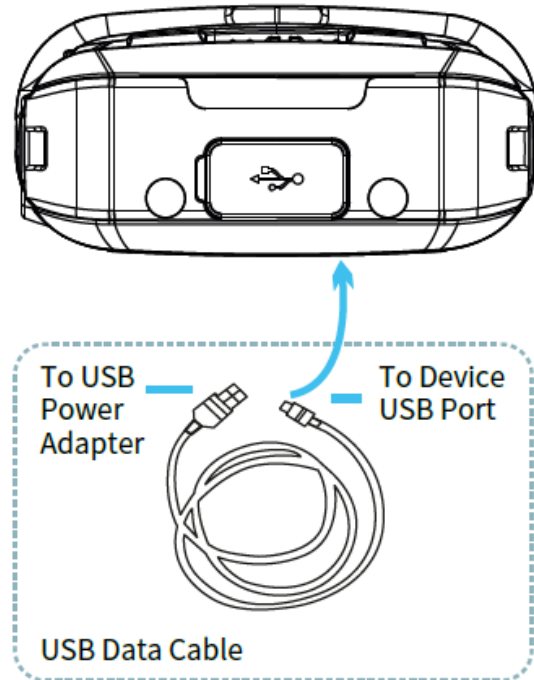
Connect the LTE handheld and power adapter using the USB Data Cable.

Red light on; indicates battery charging in progress.

Green light on; indicates fully charged.

Notice:

Always use Telo Original batteries and chargers. The warranty does not cover damage caused by non-Telo batteries and/or chargers.



Cautions

- Risk of explosion, fire or chemical burns if battery is disassembled, crushed, stricken, trampled, short-circuited, incinerated or exposed to high temperature over 60°C.
- Don't use damaged or weeping battery.
- Keep the battery dry and out of Children's reach.
- Properly dispose of failure batteries in accordance with local regulations.
- Although your device is quite sturdy, it is a complex piece of equipment and can be broken. Avoid dropping, hitting, bending, or sitting on it.
- Make sure the charger/USB port, microSD card/SIM card slot covers are properly seated, with no foreign objects obstructing the seals.
- Do not use the charger/USB port for charging, data transmission, etc. until the phone is completely dry.
- Do not store the device under any circumstance containing electronic erosive material.
- Avoid pulling the device up by holding the antenna or accessories.
- Please power off and unload the battery before cleaning the device.
- Use a dry and clean lint-free cloth or hairbrush to keep the device and charger docking port clean.
- Avoid using any chemical agent including detergent, alcohol, aerosol spray or oil preparations as cleaning solution.
- Dry your device completely after cleaning and before using it again.